

Edhouse Company

March 2018, Radoslav Slovák

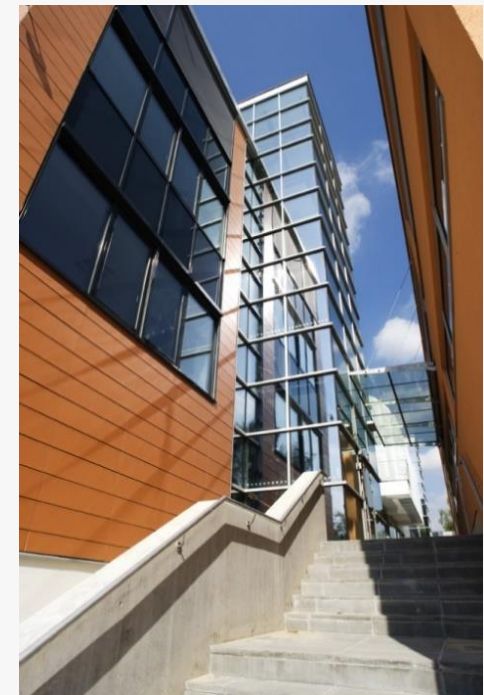


Univerzita Tomáše Bati ve Zlíně
Fakulta aplikované informatiky



About the Company

- ▶ Well-established software house
- ▶ Present on market since 2006
- ▶ Located in **Czech Republic, Zlín and Olomouc regions**
- ▶ Team of **85 software engineers**, stable growth



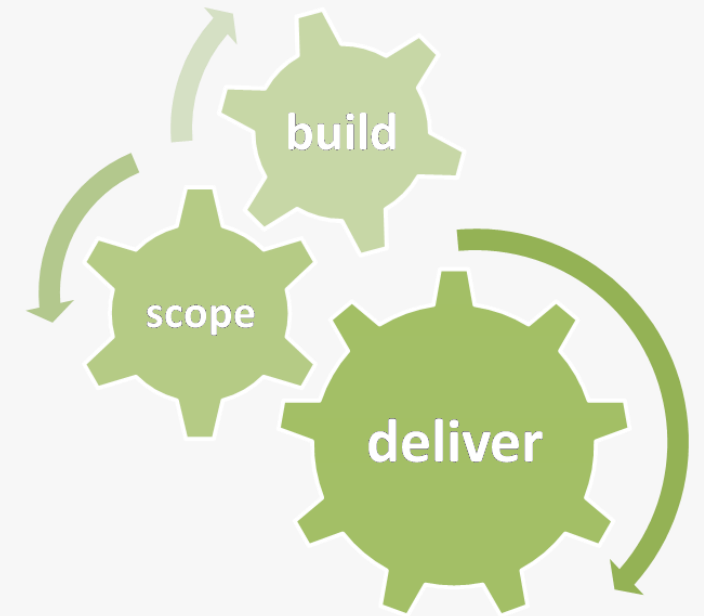
Services and Technologies

- ▶ **Outsourcing** of software development – building **remote teams**
- ▶ **Custom** software solutions
- ▶ **Technologies**

Microsoft.NET C#, WPF, ASP.NET, C++, JavaScript frameworks, Java EE – Spring, Hibernate, MS SQL Server, Oracle Db, Mobile Platforms, ...

- ▶ **Tools**

Git, TFS, RTC, Mercurial, SVN, Redmine, Jira, Visual Studio, IntelliJ Idea, Resharper, ...



Microsoft Partner
Silver Application Development



Microsoft
CERTIFIED
Professional Developer

ORACLE
Certified Associate

Edhouse Sites



- ▶ Zlín (est. 2006), headquarters
- ▶ Vsetín (est. 2014)
- ▶ Olomouc (est. 2017)



References

ThermoFisher
SCIENTIFIC



FEI™



NCR



ON Semiconductor®



ComAp™
The heart of smart control



T-Mobile®

javlin
Data Solutions

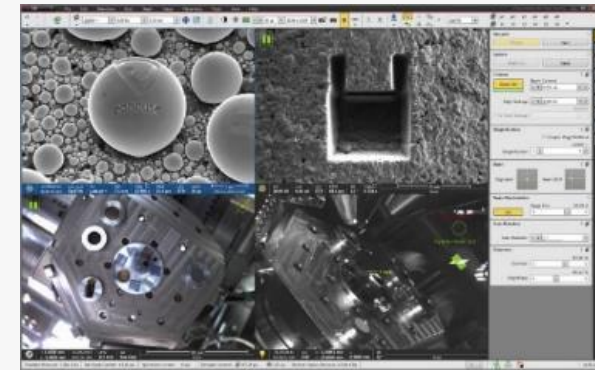
Telefonica

O₂

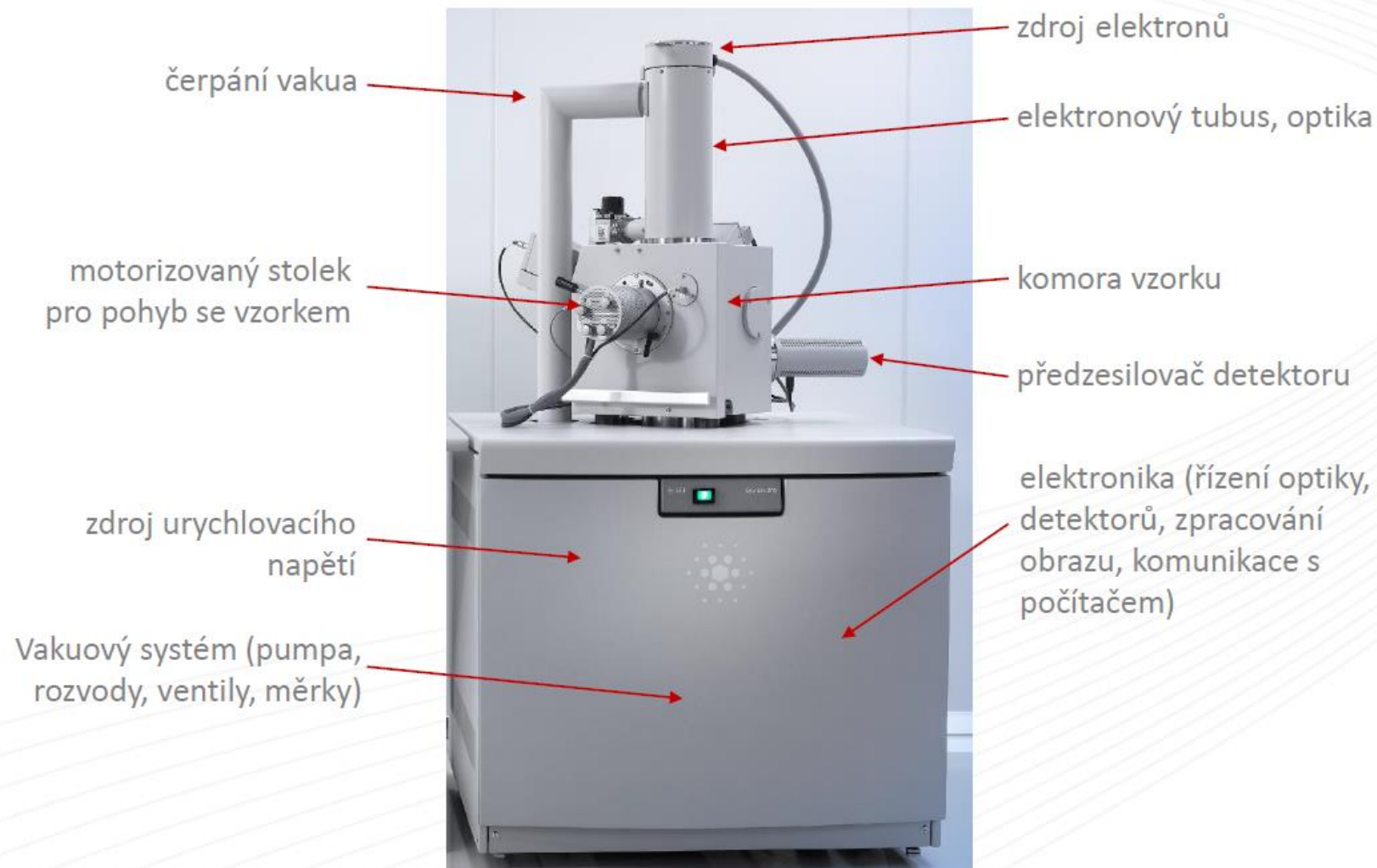
Honeywell
THE POWER OF **CONNECTED**



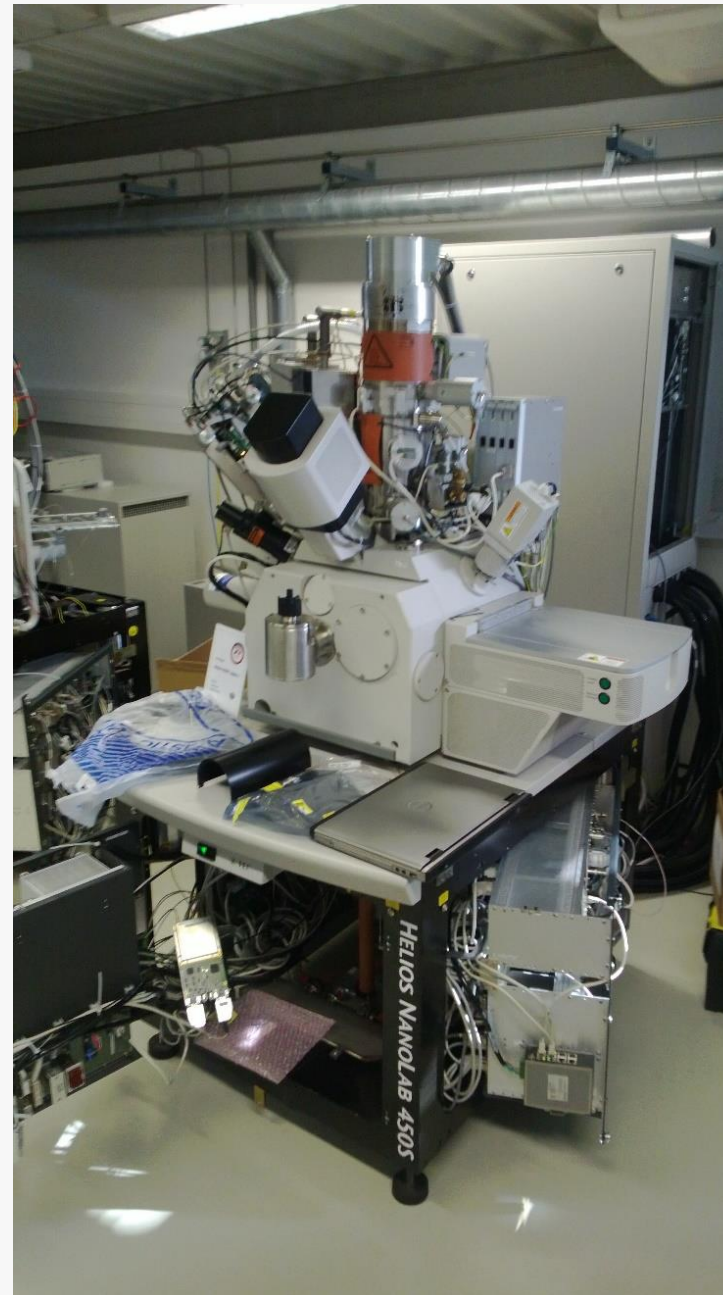
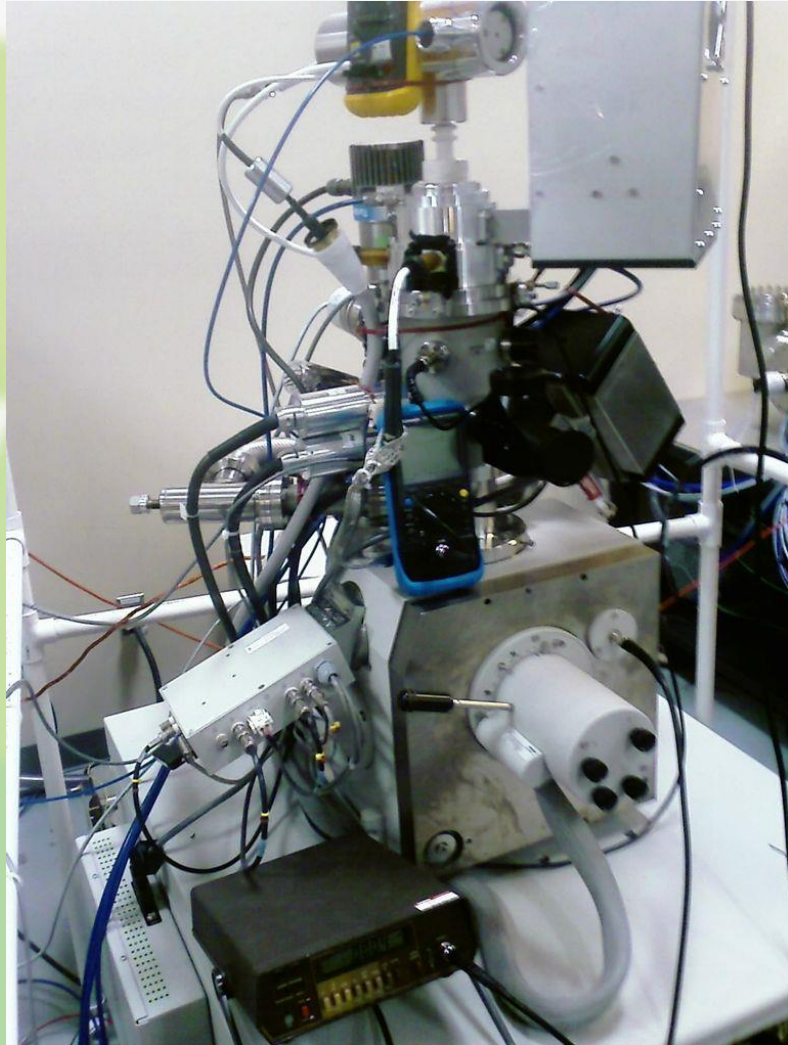
- ▶ Electron microscope manufacturer (formerly FEI)
- ▶ Cooperation since 2007
- ▶ Software development
 - ▶ Controlling software core (MS C++)
 - ▶ Desktop applications (.Net WPF, C++ Qt)
 - ▶ Firmware (ARM, C++)
 - ▶ Development tools (.Net, ASP.Net)
- ▶ System integration, testing, on-site prototypes
- ▶ Project management, solution delivery



Skenovací elektronový mikroskop



Obvykle ale vypadají mikroskopy
ve vývoji spíše takto:



- ▶ Leader in customer transaction technologies
 - ▶ retail, hospitality, finance, travel ..
- ▶ Cooperation since 2012
- ▶ Software development
 - ▶ Retail Solutions
 - ▶ Windows platform, C++, C# .Net, SQL
 - ▶ Hospitality Solutions
 - ▶ Windows platform - C# .Net, ASP.Net, web services, SQL
 - ▶ Mobile platforms
- ▶ Remote SCRUM teams
- ▶ Escalated support



Solution Legend

OPERATE

1. **POS:** Trusted by companies worldwide, this solution integrates your complex operations with an easy-to-use user interface to serve your customers quickly.
2. **Tiger Fuel Controller:** Allows for direct connectivity to all major brands, the Tiger fuel controller was designed to dramatically decrease transaction times and to allow for remote support and software upgrades.
3. **Integrated Electronic Payments:** Support a wide range of electronic payments through the POS, including fleet, ACH and prepaid cards while complying with industry security standards.
4. **Loyalty Manager:** Interfaces with a wide range of loyalty programs to support various marketing initiatives, from coalition programs to frequency or points based models.
5. **Integration Manager:** Connects to the major back office systems in the industry, with support for the NAXML POS-BO industry standard. This tool provides sophisticated diagnostics and speedy imports/exports.
6. **Configuration Manager:** Centrally controls POS configuration settings ranging from tax setup to POS buttons to security settings. Set up ICR scripts and view them how they would appear on the actual ICR screen before sending to the site.
7. **Command Center:** Support tool that manages the enterprise's technical installation, providing real-time monitoring and proactive alerts to resolve issues before they impact operations.

EXPAND

8. **Kitchen Display and Production:** The highly-configurable system provides advanced routing options as well as many other robust capabilities enabling faster order fulfillment and accuracy.
9. **Drive-Thru POS:** Enhance sales reach by providing a sophisticated and integrated drive-thru solution.
10. **Digital Menu Boards:** Leverage your brand while engaging your customers. A robust, centralized content management system enables optimization of this marketing medium.
11. **Car Wash Payments Integration:** Provide your customers with the ability to purchase car washes at the tunnel with the same electronic payments that are supported in your store. Increase customer satisfaction and car wash sales, reduce transaction fees and more easily reconcile your car wash business.

ENGAGE

12. **ConvenienceGo:** A mobile application that puts the power of the transaction in the hands of the customer. Through a smart phone or device, the consumer can authorize the dispenser and then shop for additional merchandise – all on one transaction.
13. **Tablet POS:** Use new tablet PC platform to serve as line-busters both inside and outside the store.
14. **Self Checkout:** The NCR SelfServ Checkout solution is a flexible, efficient way to improve operations and enhance the shopping experience.
15. **Online Ordering:** Enabled straight from the web or a mobile device customers can order, pay online, and later pick up their meal or products at the nearest store. The solution is utilized by leading QSR and fast casual providers.
16. **Advanced Marketing Solution:** NCR's Advanced Marketing Solution (AMS) is an industry-leading offer management and targeted marketing platform. Retailers can design, create, deploy and execute targeted offers that are executed across all channels – Point of Sale (POS), web, kiosk, fuel and mobile devices.
17. **Pulse:** Placing the power of real-time data on mobile devices, the Pulse dashboard provides personnel from across the organization the right information at the right time to make great decisions.



ON Semiconductor




- ▶ Global manufacturer of semiconductors
- ▶ Cooperation since 2014
- ▶ Software development
 - ▶ Manufacturing Information Systems
 - ▶ Java EE, OracleDB
 - ▶ Manufacturing Control and QA tools
 - ▶ C++, C#
- ▶ Remote development teams
- ▶ Product development management







- ▶ Producer of Power Generation Controllers
- ▶ Cooperation since 2013
- ▶ Software development
 - ▶ SCADA monitoring and controlling PC tool
 - ▶ C#, WPF
 - ▶ UI components



- ▶ Competence for software development management and solution delivery
- ▶ UI automated testing







[proč Edhouse](#) [případové studie](#) [kariéra](#) [studenti](#) [kontakt](#) 



Přidej se k nám.

Neboj se a napiš Janě, ona už něco vymyslí.

→ **VOLNÉ POZICE**



Příležitosti pro studenty



Letní stáže

Podílej se s námi na zajímavých softwarových projektech třeba již během studia. Jsme lokální softwarová společnost s globálními klienty a baví nás dělat software s přidanou hodnotou

→ **VÍCE INFORMACÍ**



Absolventi

Studentská léta se Ti blíží ke konci a ty začínáš přemýšlet, kam pošleš životopis a kde odstartuješ svou kariéru? První práce je důležitá, u nás získáš potřebný rozhled!

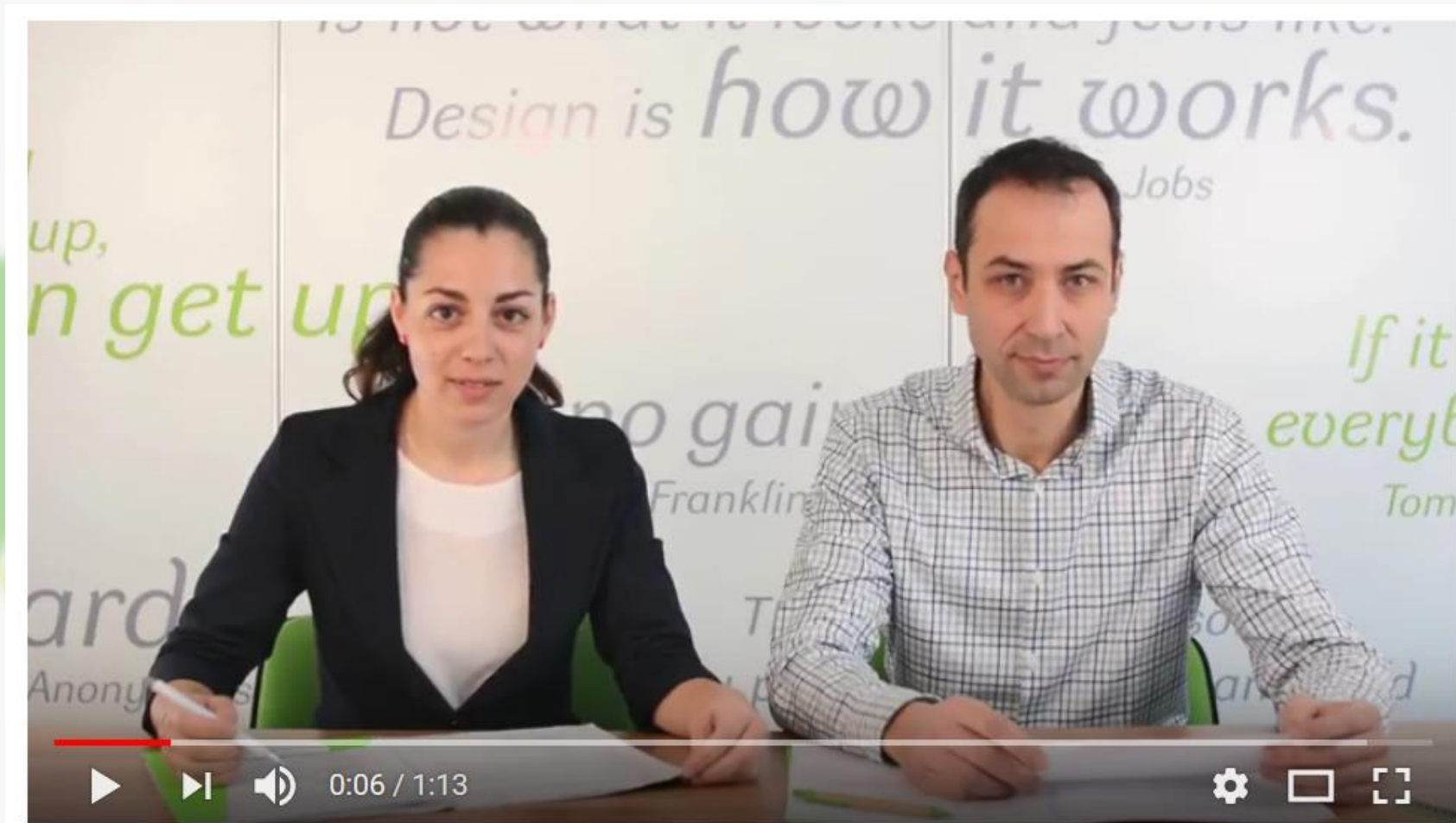
→ **VÍCE INFORMACÍ**

Stáže

Posuň se od
Zjisti, jak to f

Nábor po našem

▶ <https://youtu.be/uluT02MwT9c>





edhouse

Edhouse s.r.o.
Nad Stráněmi 5656
760 05 Zlín
Czech Republic
+420 573 775 900

www.edhouse.cz

Radoslav Slovák, majitel
slovak@edhouse.cz

